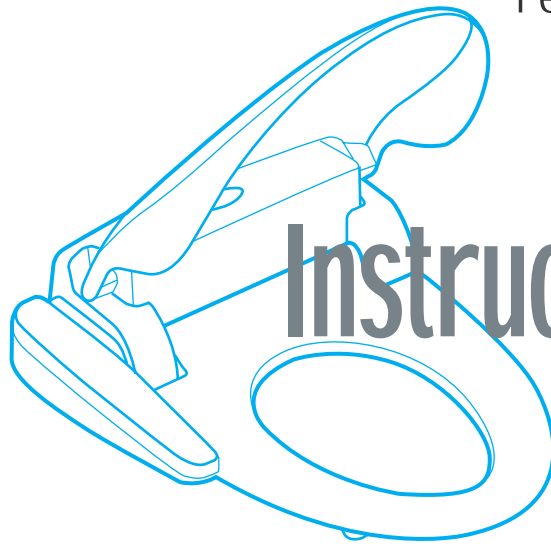


USPA



Personal Hygiene Appliance

Operating Instruction Manual

UB-2210

UB-2220

UB-2235

** You are kindly requested to read carefully this operation manual for proper use of this appliance with due attention.*

** At any time when you have questions while in your use of this appliance, please do not hesitate to keep in touch with the dealer where you bought this appliance or consult us.*

** Save this manual and place in an easily accessible location.*



USPA [ju:spa]
USPA is a new compound word,
which means your spa.
Welcome to the Cozy Couch"USPA"

SAMHONGTECH CO., LTD.

THIS UNIT WAS MANUFACTURED FOR HOUSEHOLD USE ONLY. READ ALL OPERATING INSTRUCTIONS BEFORE INSTALLATION.

Notes

1. This product should be installed according to this manual.
2. Please read this manual carefully and install properly.
3. Please save this manual and place an easily accesible location.
4. Do not attempt to service this appliance yourself. Doing so could void warranty.

Nano-Silver Technology

Nanotechnology is a cutting edge technology which is a rapidly growing science of producing and utilizing nano-sized particles that measure in nanometers (1 nm = 1 billionth of a metre).

Silver has been used for the treatment of medical ailments for over 100 years due to its natural antibacterial and antifungal properties. The nano-silver when in contact with bacteria and fungus will adversely affect cellular metabolism and inhibit cell growth. In another words, the nano-silver inhibits multiplication and growth of those bacteria and fungi which cause infection, odour, itchiness and sores. eLu is manufactured applying new Nano-Silver technologies and absolutely does not allow any bacterial and fungus contamination.

Table of Contents

PREPARATION

| | |
|---------------------------------|---|
| 1. IMPORTANT SAFEGUARDS | 1 |
| 2. CAUTIONS BEFORE INSTALLATION | 2 |
| 3. IDENTIFICATION | 3 |
| 4. SAFETY INFORMATION (DANGER) | 4 |
| 5. SAFETY INFORMATION (WARNING) | 6 |

HOW TO USE

| | |
|-----------------|----|
| 6. HOW TO USE | 8 |
| 7. HOW TO CLEAN | 10 |
| 8. MAINTENANCE | 11 |

INSTALLATION

| | |
|-------------------|----|
| 9. HOW TO INSTALL | 12 |
|-------------------|----|

ETC

| | |
|--------------------------------|----|
| 10. BEFORE CALLING FOR SERVICE | 14 |
| 11. SPECIFICATION | 14 |

1 Important Safeguards

When using electrical products, especially when children are present, basic safety precautions should always be followed, including the following:

1. READ ALL INSTRUCTIONS BEFORE USING

DANGER - To reduce the risk of electrocution:

1. Do not place or store this appliance where it can fall or be pulled into a tub or sink.
2. Do not place in, or drop into water or other liquid.
3. Do not reach for a product that has fallen into water. Unplug immediately.

WARNING - To reduce the risk of low-grade burns, electric shock, fire or injury to persons.

1. Close supervision is necessary when this appliance is used by or near the very young, the elderly or in invalid. Children should not be permitted to use or touch this appliance. Do not leave children unattended in any room where this product has been installed. Be sure to adjust the temperature of the toilet seat for the elderly, those who are incapacitated or persons with sensitive skins.
2. Use this appliance only for its intended purpose as described in this manual. Do not use attachments not recommended by the manufacturer.
3. Never operate this appliance if it has a damaged cord or plug, if it is not working properly, if it has been dropped, damaged or dropped into water.
4. Install the unit properly by following the installation procedure.
5. Only authorized persons can install or repair the unit. Do not attempt to service this appliance yourself. Doing so could avoid warranty.
6. Keep the cord away from heated surfaces.
7. Never drop or insert any objects into any opening or hose.
8. Do not use outdoors or where aerosol spray products are being used or where oxygen is being administered.
9. Always follow the grounding instruction in this manual before plugging in the unit.

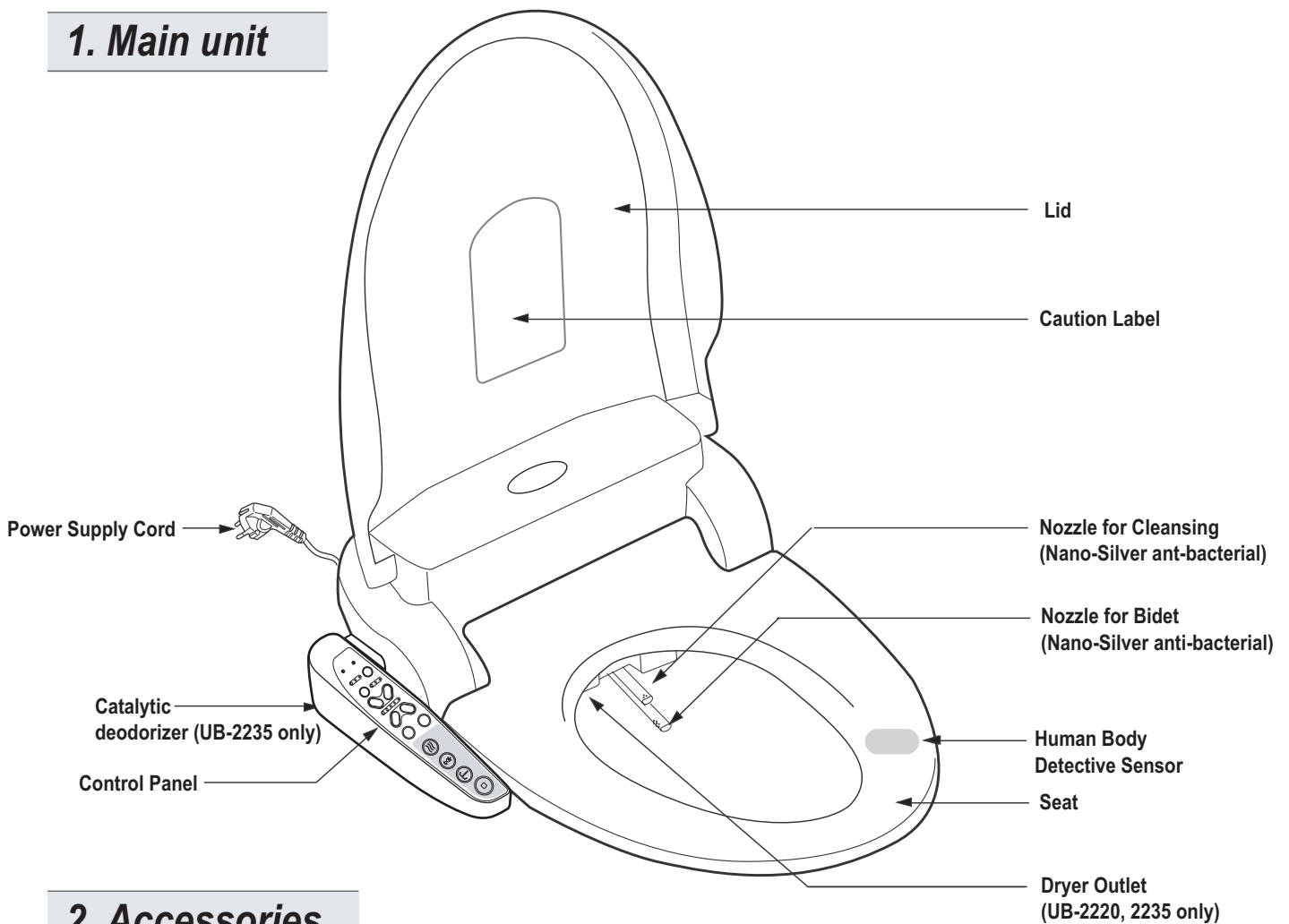
2 Cautions before installation

1. Note the following important points

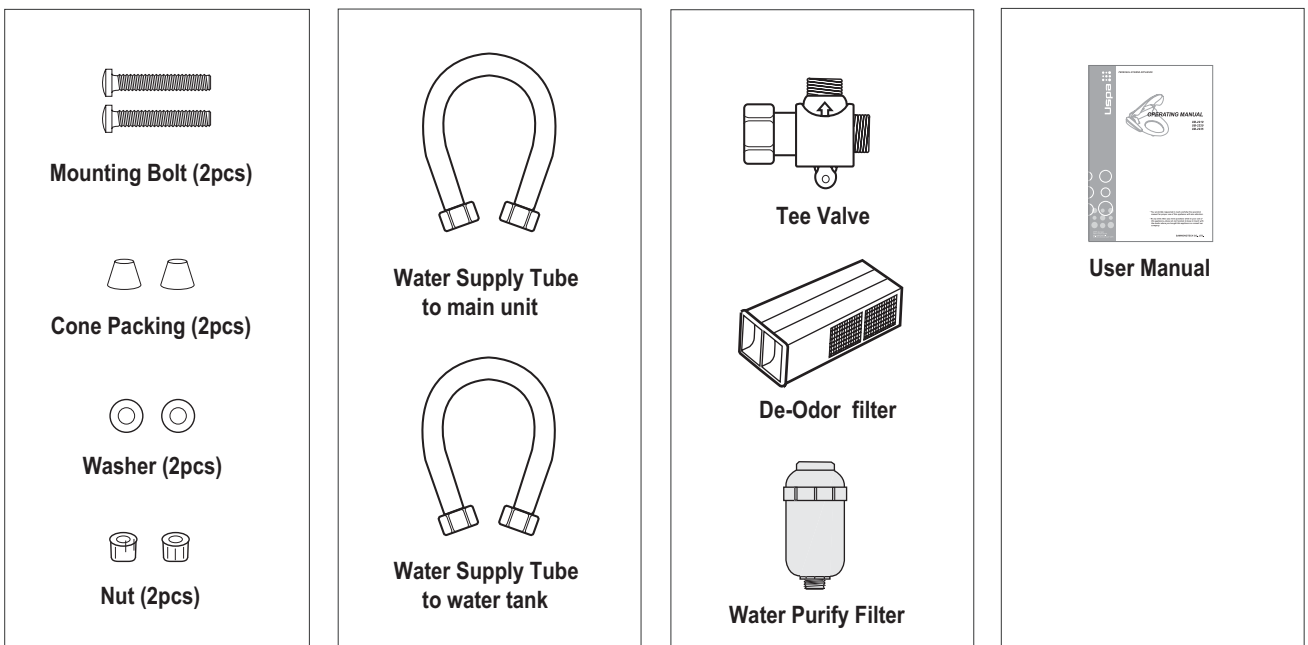
1. Do not install in a location where water might be splashed on this appliance or in a location exposed to such excessive moisture that condensation forms on the products surface.
2. To avoid damage to electronic components due to high levels of humidity, provided adequate ventilation by opening a window and/or door when bathing. You may find operating an exhaust ventilating fan during these times of high humidity beneficial.
3. Use a water supply having a water pressure of 0.08MPa to 0.74MPa
4. Connect the product to a pipe carrying potable water. Do not connect to an industrial water line or other water supply that does not carry water of drinking quality.
5. In areas where water freezes in pipes in winter make arrangements to keep the pipes warm.
The water remaining in the unit may sometimes freeze during storage in winter. In that case, warm the unit in the room before installation.
6. The thermal protector in the water tank may sometimes trip during storage or transportation in warm weather causing non-operation. In that case, cool the unit in the room before installation.
7. The rated power voltage is 230V AC, 50Hz and the rated power consumption is 735W.
8. Do not supply electrical power to the unit until the plumbing installation work has been completed; it could cause malfunction.

3 Identification

1. Main unit



2. Accessories



4 Safety information (Danger)



DANGER

Please follow basic instructions to ensure the safe use of your appliance

- indicates a prohibited use of the appliance.
- indicates a required step in use of this appliance.

- | | | | |
|--|---------------------------|--|------------------------------|
| | Prohibition | | Do not handel with wet hands |
| | Do not throw any firearms | | Do not disassemble |
| | Do not wash | | Ground connection |
| | | | Required step |



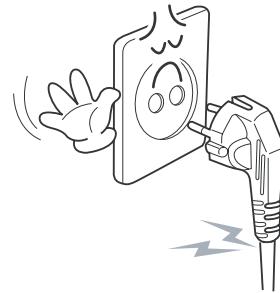
Meanings of symbols



PROHIBITED

Do not use a faulty or loose electric outlet or cord.

- Doing so may result in a short circuit, electric shock or fire.



REQUIRED

Do not cover or insert anything into the warm air dryer outlet.

- If obstructed with any objects, it may result in fire.
- If obstructed with hands, it may result in injury.



NO FIREARMS

Do not throw anything flammable into the toilet.

- Doing so may result in fire.



DO NOT WASH

Do not wash this appliance with water.

- Doing so may result in fire or electric shock.



GROUND CONNECTION

Grounded wire or outlet must be installed

- If avoided, it may result in short shock or malfunction.
- If not grounded plug used, make sure to install grounded wire





Danger

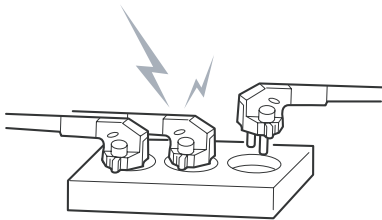
Please follow basic instructions to ensure the safe use of your appliance



PROHIBITED

Do not use many appliances in a multi outlet

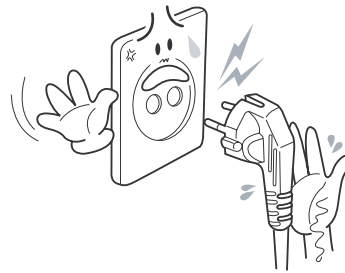
- Doing so may result in fire or damage.
- Be sure to use a dry and clean outlet.
- Do not use a faulty or loose outlet.



NO WET HANDS

Plug and unplug properly

- Do not plug or unplug with wet hands. It may result in injury or short circuit.
- Do not grasp the cord when unplugging. Pull out the plug properly.



DO NOT DISASSEMBLE

Do not use when the seat and lid are disassembled.

- Doing so may result in electric shock due to high voltage inside.



REQUIRED

Unplug when beeping or smelling strangely.

- Unplug right away.
- Contact your dealer where you bought this appliance.



DO NOT DISASSEMBLE

Do not disassemble, repair or modify this appliance.

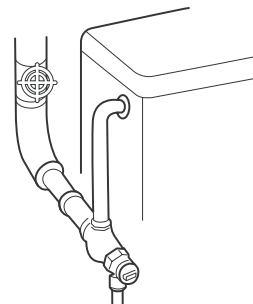
- Doing so may result in fire or electric shock.



PROHIBITED

Use tap potable water only. (ground water)

- Not doing so may occur irritation or injury to your skin.



5 Safety Information (Warning)



Warning

Please follow basic instructions to ensure the safe use of your appliance



PROHIBITED

Do not step or place heavy objects on this appliance.

- Doing so may damage the unit.
- Do not step on a lid, seat or control panel to avoid injury or damage.



REQUIRED

Do not force to close the lid.

- Doing so may cause malfunction.



REQUIRED

Be aware of urine splash on a nozzle or warm air dryer outlet.

- Not doing so may result in smelling or products failure.



PROHIBITED

Do not sit or lean against the lid or control panel.

- Doing so may cause malfunction or breakage.



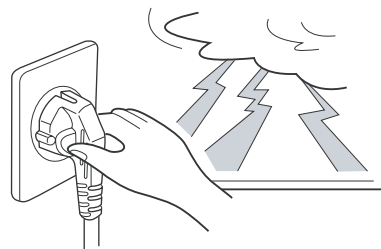
REQUIRED

Unplug while not using over extended period of time.



REQUIRED

Unplug while thundering or lightning.





Warning

Please follow basic instructions to ensure the safe use of your appliance



PROHIBITED

Do not pull out the waterhose forcedly.

- Doing so may cause the water leakage.



REQUIRED

Use this appliance in a toilet only.

- Not doing so may result in fire, injury or electric shock.



Improper use



PROHIBITED

Do not put a vase, water cup or small materials on this appliance.

- The unit may be out of order when damaged.



PROHIBITED

Be aware of a low-grade burn.

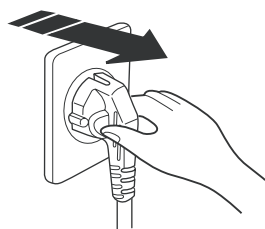
- It may result in a low-grade burn if sitting on the heated seat for a long time.
- Be aware of being used by the following :
 - Children, senior citizens, patients, or who cannot control the grade of temperature.
 - Sleeping pills users, or people who are on medication that causes drowsiness.
 - Who are drunk or very tired and may fall asleep while sitting on the unit.
- If injured in a low-grade burn, see a doctor immediately.



REQUIRED

Unplug when cleaning.

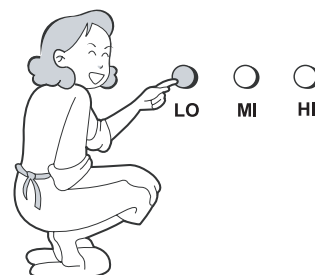
- Not doing so may result in fire or electric shock.



REQUIRED

Use the low temperature for children and handicapped people.

- If high temperature sets up, it may result in burns due to not recognizing the temperature.



6 How to use

※ Caution

- Be aware of not drowning a remote control in water. It may cause out of order or malfunction.
- All functions will be operated when the seat is occupied except Nozzle Cleaning.

Stop

- Press "STOP" to stop all operation.
- When a user stands up, all operation will stop automatically.

Cleansing

- Press "CLEANSING" to clean the posterior. The function stops in a minute automatically.
- Press "CLEANSING" again to activate moving wash. The nozzle moves back and forth automatically to widen cleansing area.

Bidet

- Press "BIDET" for front cleansing. The function stops in a minute automatically.
- Press "BIDET" again to activate moving wash. The nozzle moves back and forth automatically to widen cleansing area.

Dry (UB-2220, 2235 only)

- Press "DRY" button after "CLEANSING" or "BIDET". Dry function stops in 3 minutes automatically.
- To alter the strength of air drying, press "DRY" again.

Air

- Press "AIR" to make aerated water spray which is made from a special air pump built in.
- Stronger but smoother aerated water spray can save water consumption.

Massage

- Press "MASSAGE" to provide pulsating water spray for feeling better.
- Press "MASSAGE" again to stop the operation.

Nozzle Position Adjustment

- The position of nozzle can be adjusted by pushing "FR" or "BK" for your setting position.



Temperature Adjustment

- Water temperature and seat temperature can be adjusted to your setting level by pushing "HI" or "LO".
- There are 4 levels (room temp, low, middle and high).

Water Pressure / Dry Temperature adjustment

- The strength of water spray pressure can be adjusted by pushing "HI" or "LO" for your setting level. (5 levels)
- The temperature of air dry can be adjusted by pushing "HI" or "LO" for your setting level. There are 5 levels for both functions. (5 levels)

Power Saving

- Press "STOP" to save the electric power while not sitting on the seat. In the economy mode, temperature of water and seat keeps to 30 celsius degree. Green light will be shown on the extra panel. When the unit is occupied in the economy mode, temperature is changed to desired level and goes back to 30 celsius degree automatically after using.
- Press "STOP" again to release the economy mode. Red light will be turned on. Temperatures are kept to desired level all the times.

Self Cleaning

- This appliance keeps clean itself automatically by rinsing off the nozzles before and after operation of BIDET or CLEANSING.

Nozzle Cleaning

- Press "FR" to clean the CLEANSING nozzle manually while not sitting on the seat (not occupying)
- Press "FR" again or "STOP" to return the nozzle to stand by mode.
- Press "BK" to clean the BIDET nozzle manually while not sitting on the seat. (not occupying)
- Press "BK" again or "STOP" to return the nozzle to stand by mode.
- Do not forcefully push or pull the nozzles or bend them.

Automatic Deodorizer (UB-2235 only)

- When the appliance is in use, the deodorizer operates for up to 20 minutes automatically.
- When a user stands up during the operation, it stops in a minutes.

Self-diagnosis System

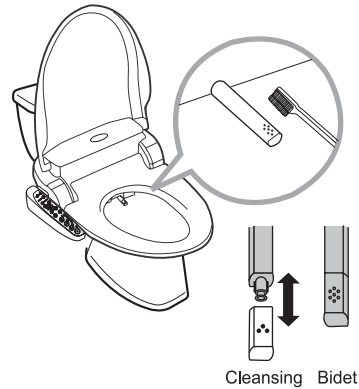
- This appliance has a self-dianostic system, whenever the appliance has a problem, a LED of seat temperature or water temperature will blink.
- Unplug the electric power cord and contact to your dealer.

7 How to clean

Nozzle Cleaning

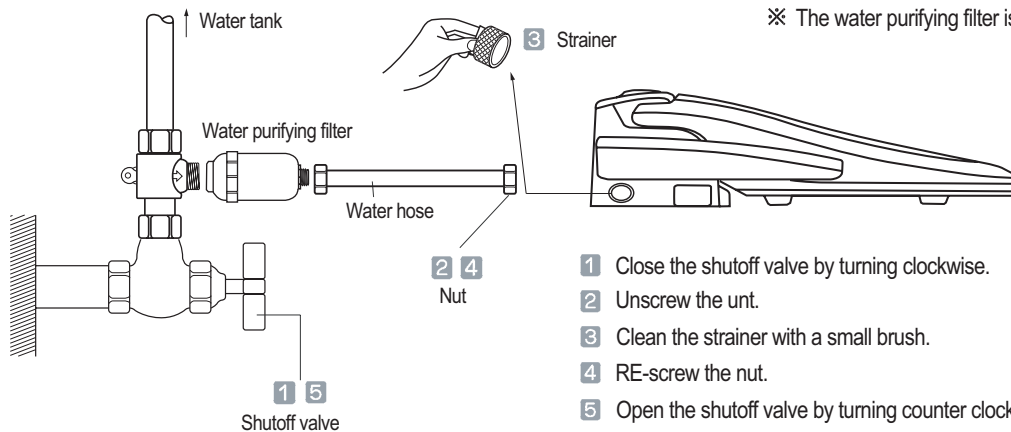
⚠ Do not forcefully push or pull the nozzles, or bend them. Make sure to use "BK" or "FR" when cleaning.

- 1 Ensure the human detective sensor is not in use. (not sitting on the seat or not place hands on the sensor part)
- 2 Press "FR", then the cleansing nozzle comes out. Press "BK", then the bidet nozzle comes out.
- 3 Do not forcefully push or pull out nozzles, or bend them. Use a toothbrush or soft cloth to clean nozzles. After cleaning, press "STOP" or "FR" for the cleansing nozzle, or "BK" for the bidet nozzle. The nozzles retract themselves. For a long time cleaning, unplug for your safety.
- 4 Do not retract nozzles without a nozzle tip. It may result in malfunction.
- 5 Be aware the nozzle tips for lost.



Cleaning the strainer

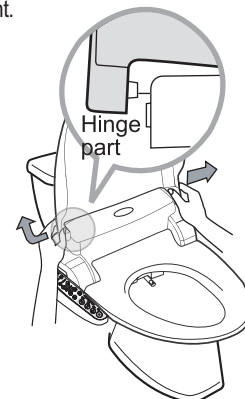
The appliance will not be operated properly if the strainer is clogged. Be sure to clean the strainer regularly.



- 1 Close the shutoff valve by turning clockwise.
- 2 Unscrew the nut.
- 3 Clean the strainer with a small brush.
- 4 RE-screw the nut.
- 5 Open the shutoff valve by turning counter clockwise.

Cleaning the body

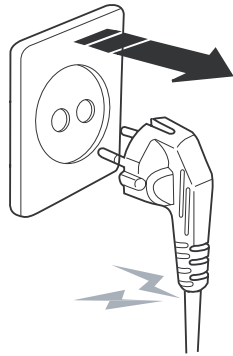
- 1 Regularly wipe off the body with a dry soft cloth or sponge, or dampened with neutral detergent.
- 2 Release the lid.
 1. Pull left and up the left hinge part.
 2. Release the right hinge part. (Be aware your fingers not to be caught)
- 3 For care of plastic body, do not use any cleansers which are not safe to use in the toilet seats (toilet cleanser, home cleanser, bleach, benzene, paint thinner, cresol etc)



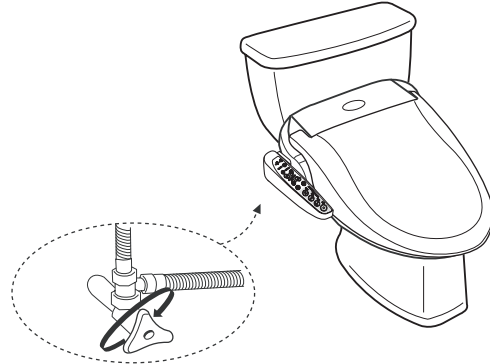
8 Maintenance

Draining water - while not using over extended period of time

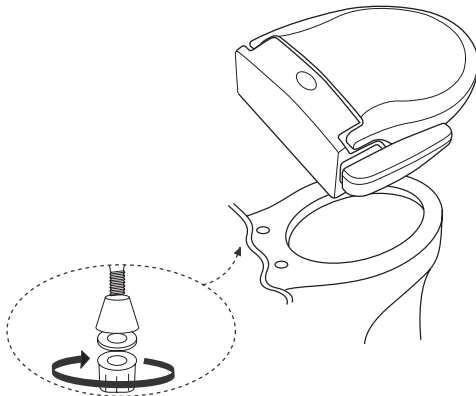
- 1** Unplug the power supply cord.
■ Not doing so may be in fire.



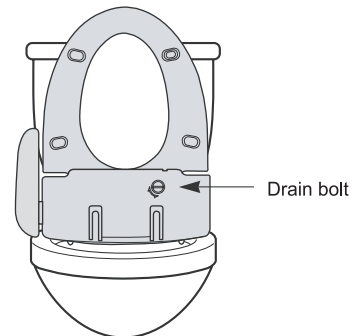
- 2** Close the shutoff valve.



- 3** Unscrew the mounting bolts.
■ Refer to the installation method.



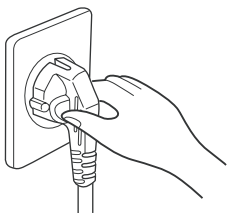
- 4** Uphold the appliance and thoroughly drain the water by unscrewing the drain bolt.
(beware of losing the drain bolt)



- 5** Screw the drain bolt and install the appliance.
■ Refer to the trial operation method in order to use this appliance again.

Preventing freezing

- 1** Make sure the power cord is plugged in properly.



- 2** Set the temperature of water as low or middle in the control panel.
(Freezing can be prevented by thermal efficiency of water tank.)
■ If there is no heating system in the toilet, wrap pipes with cloth or other materials.

- 3** Not using the unit for a long time in winter, unplug and drain the water from the water tank and pipes thoroughly.
■ Refer to the water drain method.

9 How to install



Do not plug the power cord until installation finished completely.
Not doing so could damage the appliance.

If electric work needed, contact to the qualified electrician or serviceman only.

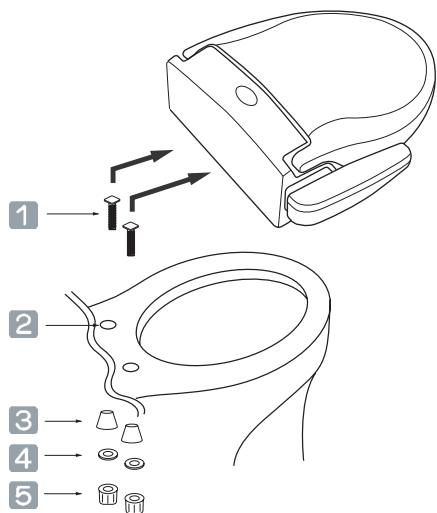
Remove the existing toilet lid and seat

1. Remove the nuts, washers and cone packings from the toilet seat mounting bolts in the back of the toilet.
2. Remove the toilet seat, lid and mounting bolts.
3. Keep them in case of installing again.

Install the appliance [Elongated Toilet is recommended. Some toilets may be not able to install this appliance.]

Installation

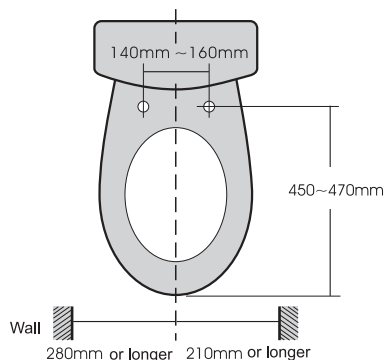
- Insert the mounting bolts through the mounting holes, and slide cone packings and washers onto the mounting bolts. Then put the nuts and tighten them.



- 1 Mounting bolts
- 2 Mounting holes
- 3 Cone packings
- 4 Washers
- 5 Mounting nuts

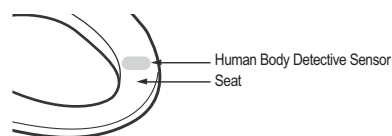
Toilet size (elongated)

- The toilet dimensions must be within those shown below. Do not install the USPA on a toilet that does not meet those dimensional requirements.

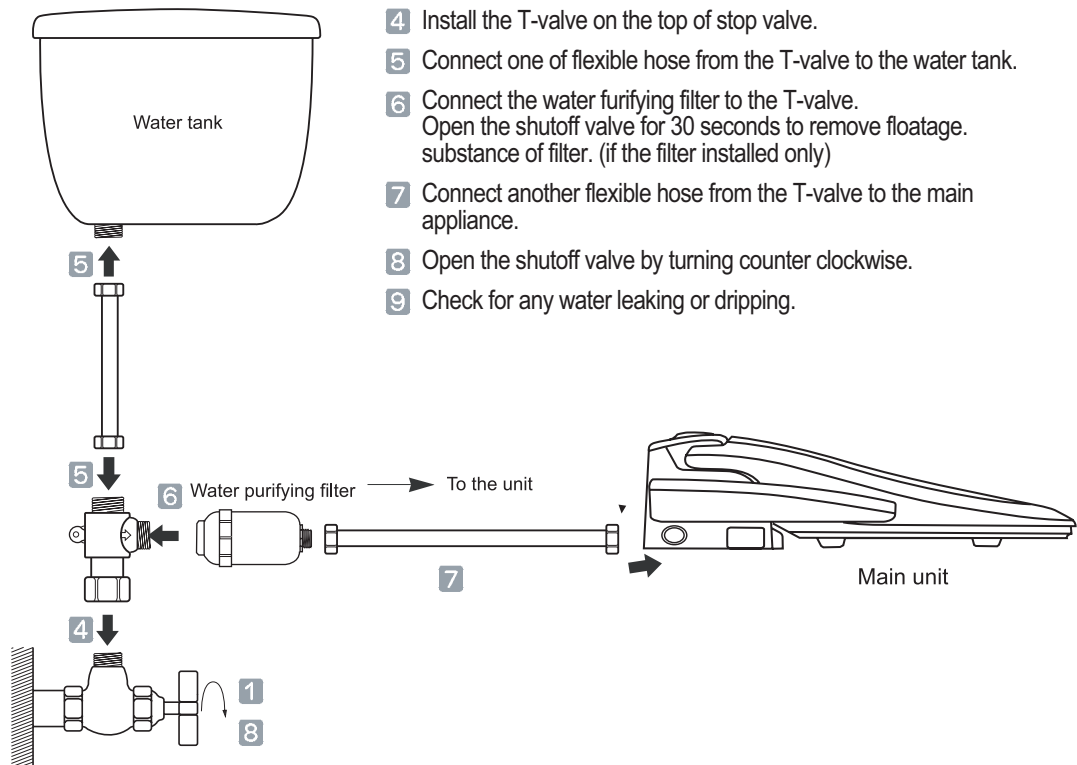


Human Body Detective Sensor

- This appliance is equipped with Human Body Detective Sensor that prevents working while seat is not occupied.
- When a user stands up while using, all operation will stop automatically.



Connecting the water hose and grounding wire



- 1 Close the shutoff valve by turning clockwise.
- 2 Flush the water tank completely to empty.
- 3 Remove existing the water supply hose from the tank.
- 4 Install the T-valve on the top of stop valve.
- 5 Connect one of flexible hose from the T-valve to the water tank.
- 6 Connect the water purifying filter to the T-valve. Open the shutoff valve for 30 seconds to remove floatage substance of filter. (if the filter installed only)
- 7 Connect another flexible hose from the T-valve to the main appliance.
- 8 Open the shutoff valve by turning counter clockwise.
- 9 Check for any water leaking or dripping.

※ The water purifying filter is optional.

Trial operation

1. Preparation

Open the shutoff valve and check for any water leaking or dripping.
 Plug the power cord into the outlet.
 Press the "BIDET" or "CLEANSING", then water tank will be filled with water in 2 minutes.
 After the water tank has filled up, you will hear long buzzer sound.

2. Checking all function

Cover the toilet bowl using the plastic wrapping sheet of the unit to prevent the washing water from being sprayed out of the toilet.
 Then check for all function described in this manual.

3. There are possibilities of water coming out that remains in the unit while heating.

10 Before calling for service

| Problem | Possible cause | Solution |
|---------------------------------------|--|---|
| Completely fails to work | Is there a power cord outage? Does the power cord unplug? Are you sitting on the seat correctly? | Check for a power cord failure or a tripped breaker Plug the power ocrd properly Sit on hte seat completely |
| Water does not spray | Is the water shutoff valve closed? Is the strainer clogged? Are the nozzles clogged? Is the water purifying filter clogged? | Check for any water leaking or dripping Clean the strainer Clean the nozzles Change the water purifying filter |
| Water is leaking or dripping | Check for all hoses are tightened properly | If wateris still leaking or dripping, contact to your dealer |
| Seat, water or air is not enough warm | Is the temperature set to OFF? Is appliance used in economy mode such a cold weather? | Reset the temperature Released the economy function |

11 Specification

| Item | | UB-2235 | UB-2220 | UB-2210 |
|-----------------------|---------------------|---|---------|---------|
| Standard power supply | | AC 220V 60Hz 660W | | |
| Water supply | Way of connection | Direct connection to tap water | | |
| | Water pressure | 0.8~7.5kgf/cm ² | | |
| Cleansing | Spray for cleansing | 1,000 ± 200ml/min | | |
| | Spray for bidet | 1,000 ± 200ml/min | | |
| | Water capacity | 1.3ℓ | | |
| | Spray temperature | Room Temp ~ 40°C | | |
| | Heater capacity | 600W | | |
| Safety feature | | Thermal switch, Temperature fuse, Floating switch | | |
| Dry | Air temperature | Room temp ~ 50 | | — |
| | Heater capacity | 250W | 250W | — |
| | Safety feature | Temperature fuse | | — |
| Heated seat | Seat temperature | Room temp ~ 40 | | |
| | Heater capacity | 55W | 55W | 55W |
| | Safety feature | Temperature fuse | | |
| Deodorization method | | Catalytic filter | — | — |
| Circuit breaker | | Within 15mA 0.1 second | | |
| Length of power cord | | 1.8m | | |
| Dimensions | | (W)460mm X (L)527mm X (H)185mm | | |
| Weight | | 4.9Kg | 4.7Kg | 4.6Kg |

※ Recommended water supply pressure is 1.0 ~ 7kg

※ The minimum available water supply pressure is 0.8, however under 1.0 pressure , water spray pressure might not be enough strong.

WARRANTY

USPA Personal Hygiene Appliance Limited Warranty

- USPA(we) warrant our products to be free from manufacturing defects under normal use and service for a period of one (1) year from date of your purchase. Only the ORIGINAL PURCHASE you may make a claim under this limited warranty.
 - Our obligation to you under this warranty is limited to repair or replacement, at our option, of defective products or parts, provided that the products were properly installed and used in accordance with instructions. We reserve the right to make inspections in order to determine the cause of the defect. We will not charge for labor or parts in connection with warranty repairs or replacement. We are not responsible for the cost of removal, return and/or reinstallation of products.
 - This limited warranty does not apply to:
 - a) Damage or loss from a fire, earthquake, flood, storm, etc
 - b) Damage or loss resulting from any unreasonable use, abuse, negligence, or improper maintenance.
 - c) Damage or loss from improper installation, removal, repair, or modification.
 - d) Damage or loss resulting from sediment or other matters contained in your water system.
 - This warranty gives you specific legal rights.
 - For warranty or service information, please contact your dealer where you bought this appliance or us.
 - Only the original purchaser may submit a claim under this limited warranty. To activate your warranty, complete this form.
 - This limited warranty is our only warranty covering your product. Repair or replacement as provided under this warranty shall be the exclusive remedy available to you. We shall not be responsible for loss of the product or for other incidental, or consequential damage or expenses you may incur or for labor or other costs due to installation or removal, or cost or repairs by others, or for any other expense not specifically stated above. Except to the extent prohibited by applicable law, any implied warranties, including that of merchantability or fitness for use, are expressly limited to the duration of this warranty.
- ※ Warning! We are not responsible or liable for any failure of, or damage to, this plumbing product or product component caused by in-tank bowl cleaners containing chlorine(calcium hypochlorite).
- ※ Note : The use of high concentration of chlorine related products can seriously damage the fittings. This damage can cause leakage and serious property damage.

For more information, please contact your dealer or us.

Purchase Date _____ Purchased From _____

Invoice # _____ Amount Paid _____ Serial # _____

Address _____ City _____ State _____ Country _____ Zip _____

Phone _____ Fax _____ E-mail _____

Mail, email or fax the warranty form to :

YOUR LOCAL DEALER FIRST where you bought this appliance

if your dealer is unable to assist you,

SAMHONGTECH CO., LTD

WOOJUNG TOWN 9F, 1488-7, KWANYANG-DONG, DONGAN-KU, ANYANG-CITY, KOREA 431-060

TEL : +82-31-420-2341~5, FAX:+82-31-426-8666

E-MAIL : webbidet@samhongtech.co.kr <http://www.samhongtech.co.kr>

Great products for your healthy living !

Manufactured by

SAMHONGTECH CO., LTD.

1488-7, WOOJUNG TOWN 9F, KWANYANG-DONG
DONGAN-KU, ANYANG-CITY, KYEONGGI-DO
REP OF KOREA

Tel : 82-31-420-2341~5 Fax : 82-31-426-8666

Printed in Korea